

BRICKLITE CLADDING PANELS

Fitting Instructions

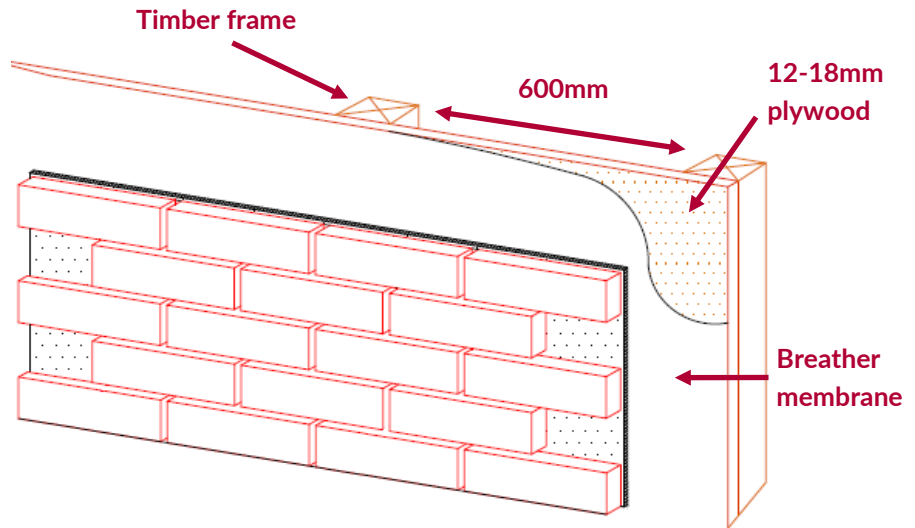


HANDLING INSTRUCTIONS

- ◆ All panels **MUST** be stored on a flat even surface on a suitable pallet.
- ◆ **DO NOT** put the panels under any stress as this could cause damage.
- ◆ **DO NOT** lift panels by the corners.
- ◆ All panels **MUST** be carried in the vertical position.
- ◆ It is advisable to support the panels whilst lifting into a vertical position.
- ◆ Gloves should be worn when handling to protect from possible sharp panel edges
- ◆ Suitable eye protection should be worn when drilling to fix panels.
- ◆ Suitable protective headgear should be used when fixing panels above head height.
- ◆ Bricklite Cladding Panels weigh approximately 35kg/m².

PREPARATION

- ◆ Bricklite cladding panels may be fixed direct to block work, tanted timber or metal section battens. Where existing walls are to be re-clad, a waterproof membrane should be fixed to the wall by means of batten set out at 600mm centres.
- ◆ The battens should be spaced so that all vertical joints between panels occur on a batten.
- ◆ The vertical joints can be sealed by applying an appropriate sealant to the back of the panel before the panel is offered into place.

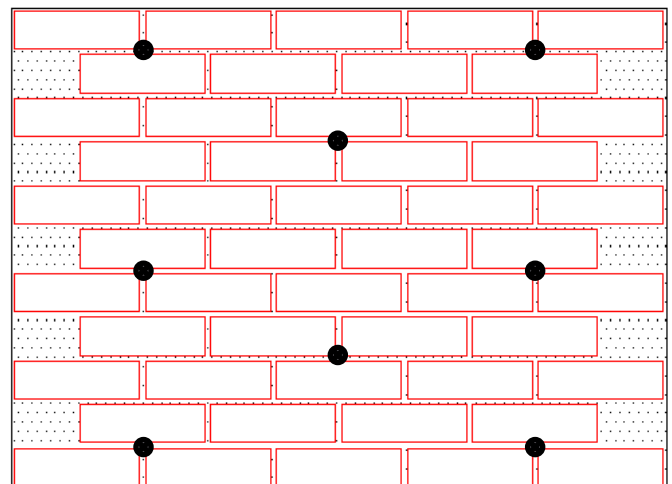


FIXING

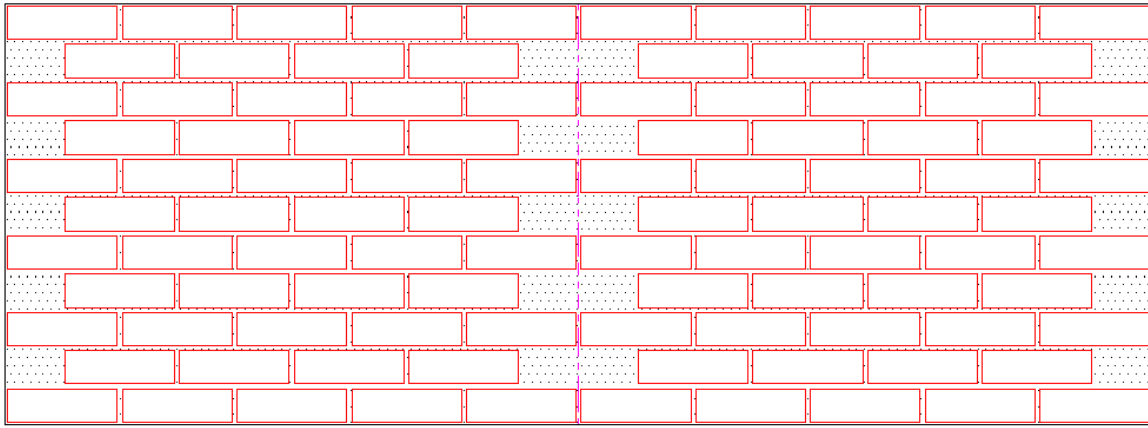
- ◆ Following the handling instructions (see above), lift the panel into desired position and support ready for fixing.
- ◆ The panels are fixed by drilling through mortar joints, starting not less than 20mm from the panel edge, at 600mm centres horizontally and vertically (see diagram). Brickfab recommends using the stainless steel screws provided (see below). The screws can then be sealed after fixing.



NO8 x 1 1/4



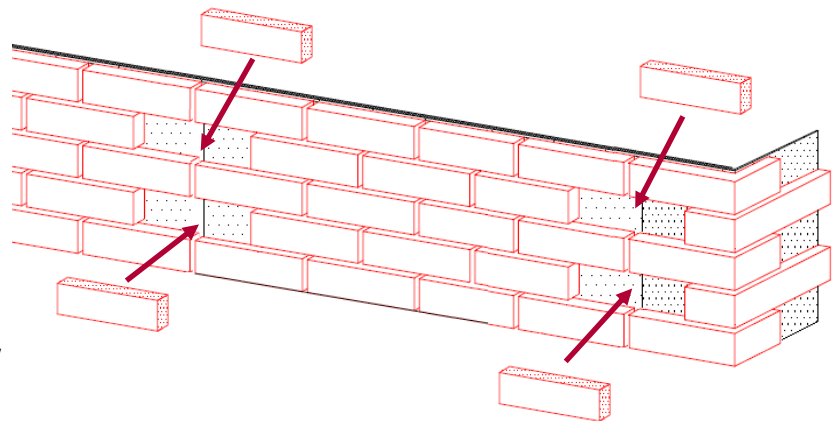
● = Recommended fixing points



- ◆ Line up the adjacent panel and fix in place as shown above.
- ◆ Joints in between panels can be sealed using an appropriate sealant.
- ◆ Panels sizes should be chosen to allow ease of handling and fixing. The use of excessively large panels to reduce the number of joints is likely to be counter-productive as the difficulty in installation makes accurate jointing harder to achieve.

FINISHING

- ◆ Once main and/or corner panels are fixed and sealed, the loose slips provided can be glued to infill where the panels meet.
- ◆ Only once all panels are fixed and slips have set should the panels be mortar pointed.
- ◆ The top of the panel, if not covered by a coping, or similar, will require a trim or flashing to prevent vertical ingress of water.
- ◆ The bottom of the panel should be left open to allow drainage of any moisture which may collect or have passed the trim.



TESTING DETAILS

- ◆ Tested by **Lucideon** to establish the integrity of the bond between the GRP backing and brick slips. Freeze thaw tested to prEN 772-22.
- ◆ Tested by **Warrington Certification** to **BS 476 PART 6: 1989** and **PART 7: 1997** achieving 0 for Fire Propagation and Surface Spread of Flame of Products.



brickfab
...simply better

Gemini Works
Estate Road
Pontypool
Torfaen
NP4 6YW

Tel: 01495 759555
Fax: 01495 759874

TECHNICAL HELPLINE
01495 759555

Email: sales@brickfab.com
www.brickfab.com

